



ASSEMBLY GUIDE

VGR-6940-20
POWERTEC WIDEBAND GRID ANTENNA,
698 TO 4000 MHz



CLIENT

DRAWING TITLE

ASSEMBLY GUIDE

PROJECT

VGR-6940-20 – POWERTEC WIDEBAND GRID ANTENNA

DRAWING REF

COVER

PAGE

1 OF 8

SCALE

NTS

REVISIONS

ZONE

REV

DESCRIPTION

DATE

BY

A

DRAFT FOR COMMENT

24/01/2023

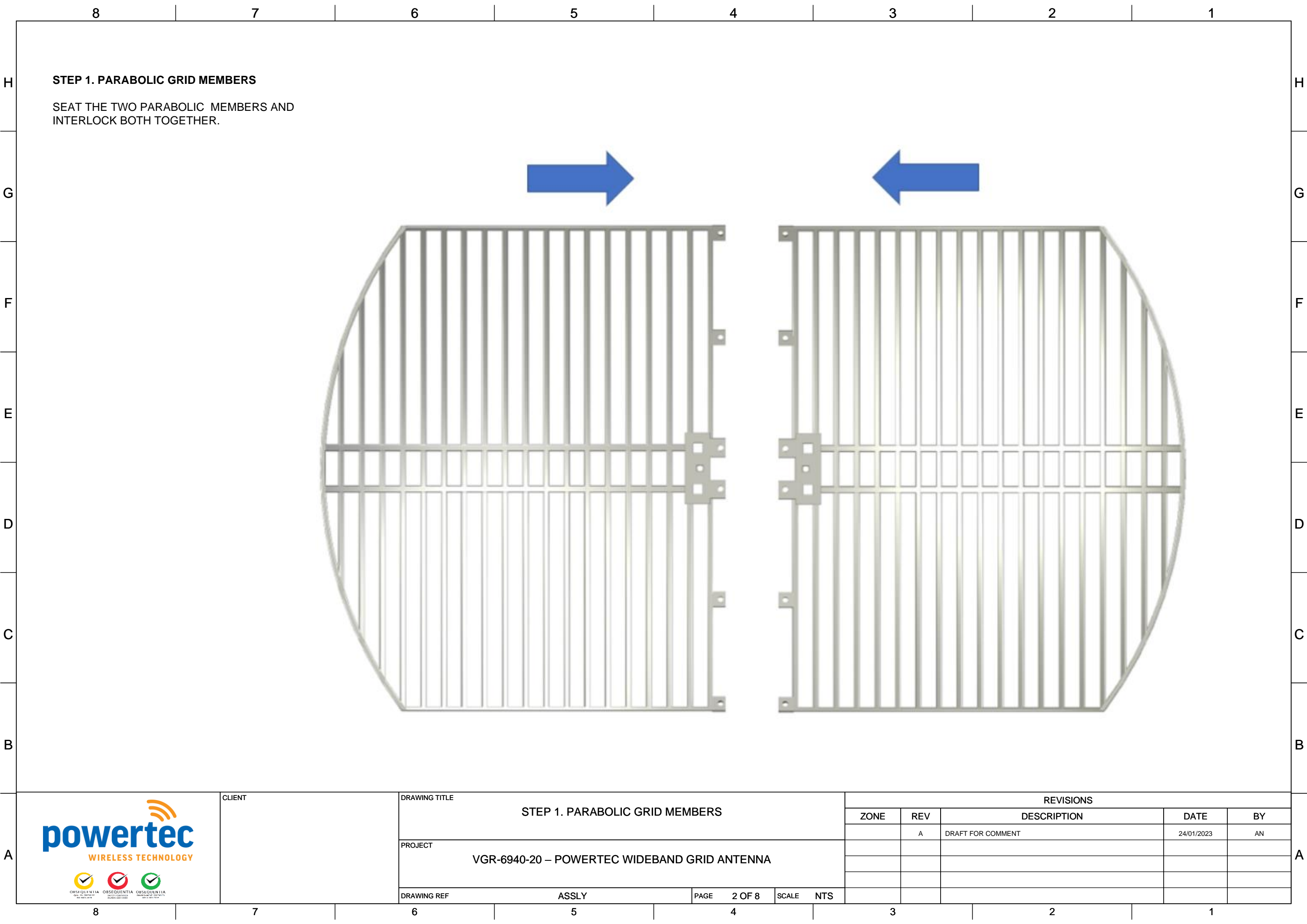
AN

B

FORMATTING

17/04/2023

DP



STEP 1. PARABOLIC GRID MEMBERS

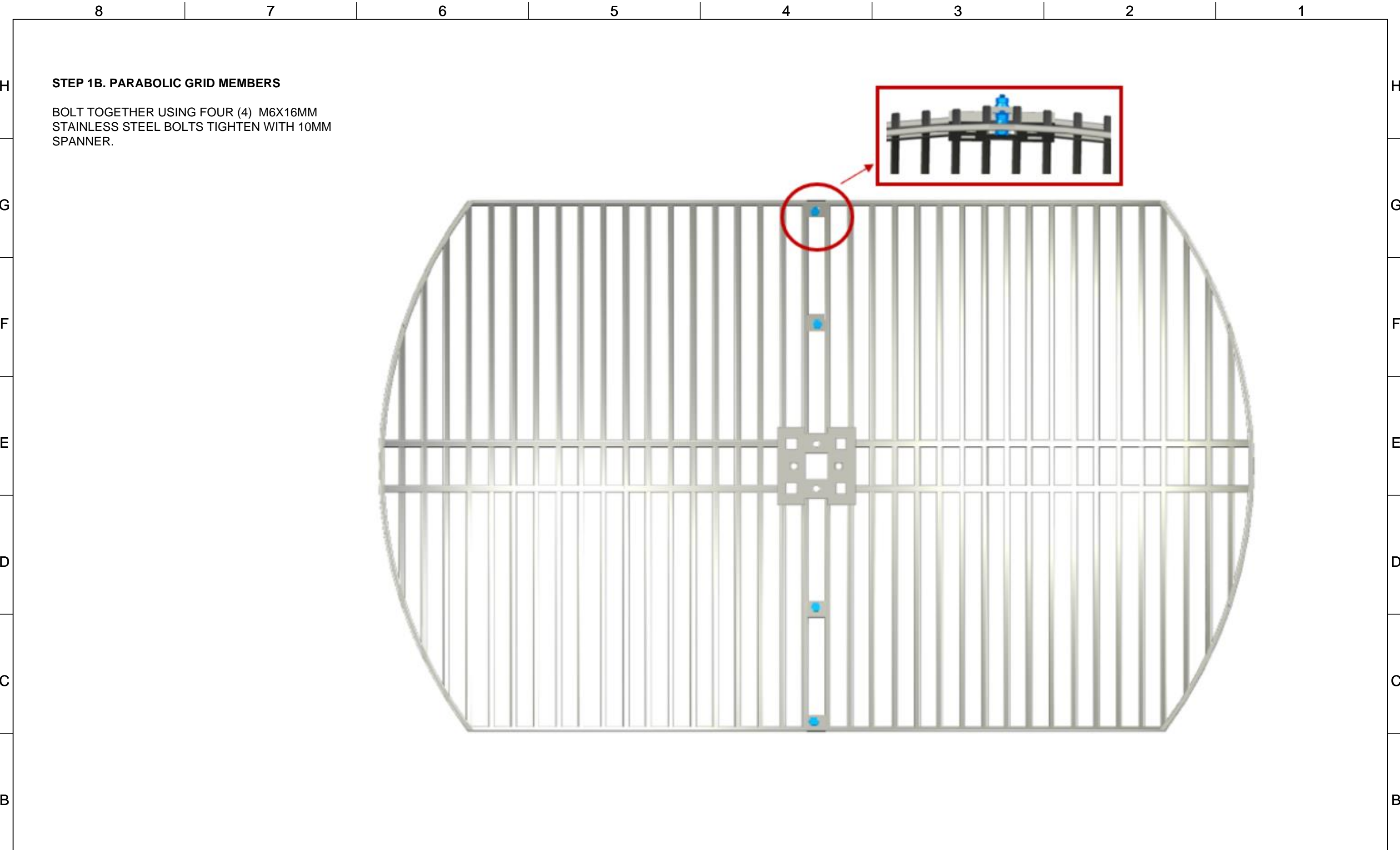
SEAT THE TWO PARABOLIC MEMBERS AND INTERLOCK BOTH TOGETHER.



WIRELESS TECHNOLOGY



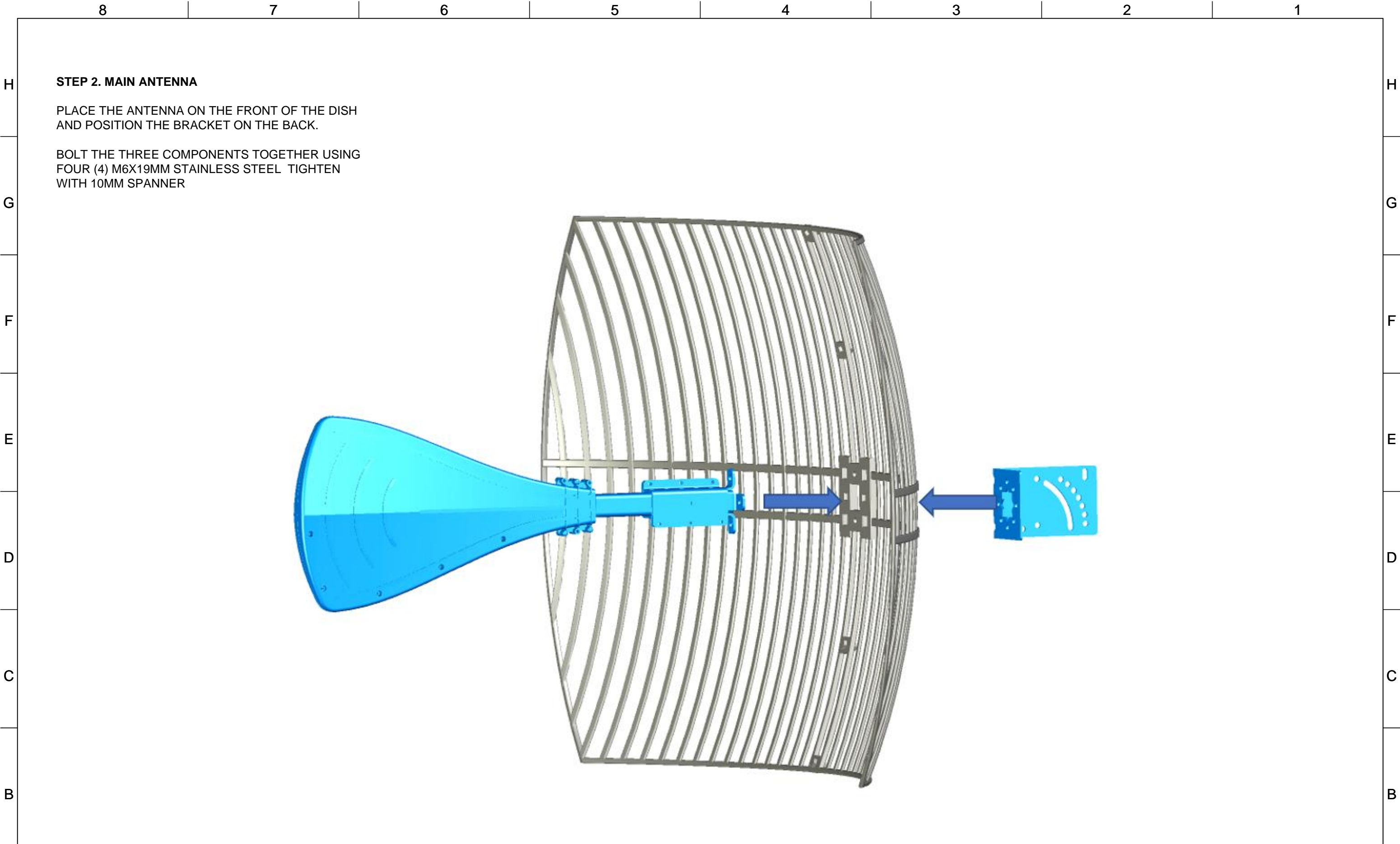
CLIENT	DRAWING TITLE				REVISIONS				
	STEP 1. PARABOLIC GRID MEMBERS				ZONE	REV	DESCRIPTION	DATE	BY
	PROJECT					A	DRAFT FOR COMMENT	24/01/2023	AN
	VGR-6940-20 – POWERTEC WIDEBAND GRID ANTENNA								
DRAWING REF	ASSLY			PAGE	2 OF 8	SCALE	NTS		



STEP 1B. PARABOLIC GRID MEMBERS

BOLT TOGETHER USING FOUR (4) M6X16MM STAINLESS STEEL BOLTS TIGHTEN WITH 10MM SPANNER.

</

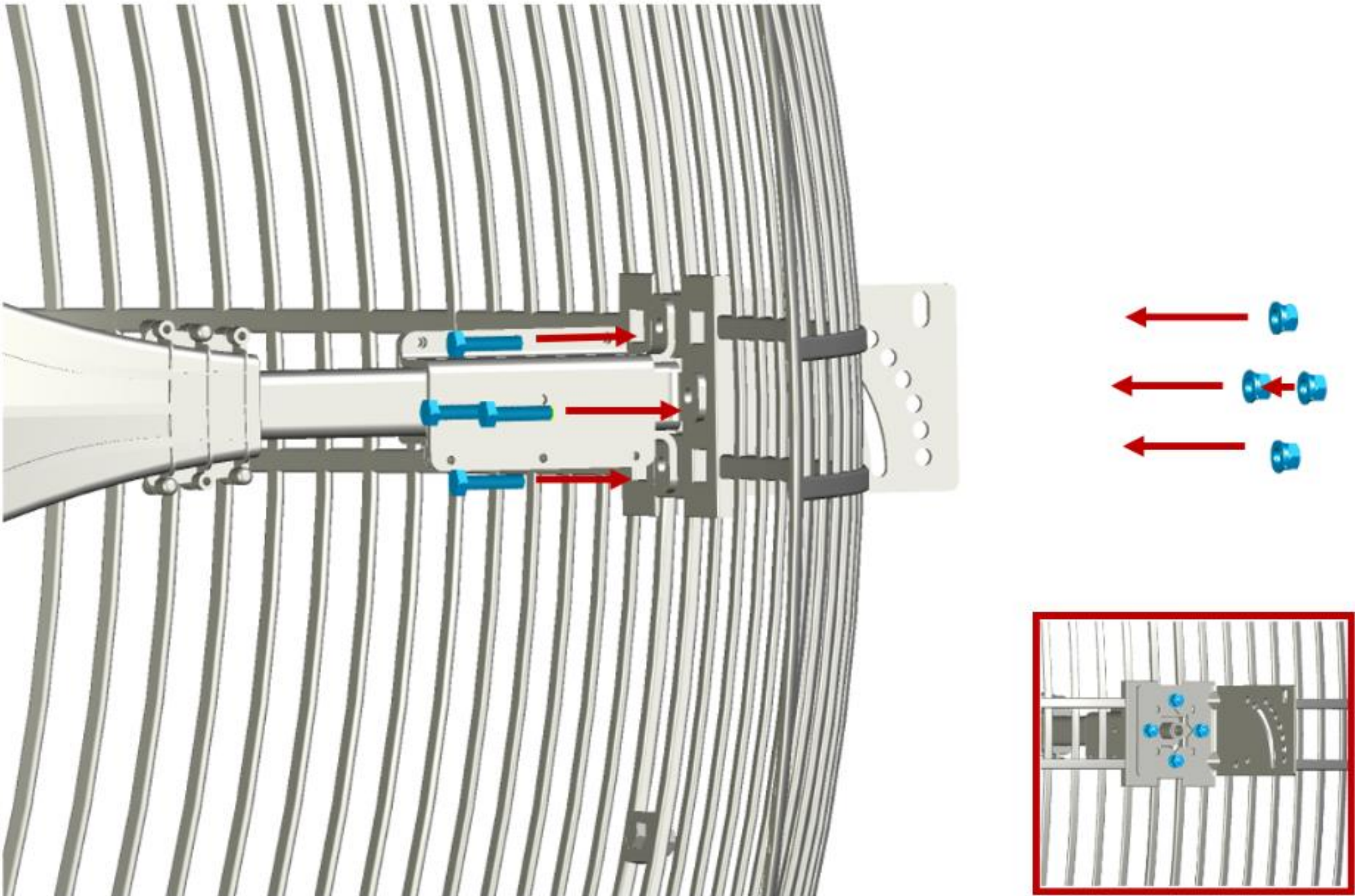


A	<div><div><div><div></div><div>powertec</div><div>WIRELESS TECHNOLOGY</div></div><div><div><div></div><div></div><div></div></div><div><div><div></div><div></div><div></div></div></div></div></div></div>	CLIENT	DRAWING TITLE			REVISIONS				
			STEP 2. MAIN ANTENNA			ZONE	REV	DESCRIPTION	DATE	BY
			PROJECT				A	DRAFT FOR COMMENT	24/01/2023	AN
			DRAWING REF							
			ASSLY							
			PAGE							
			4 OF 8							
			SCALE							
			NTS							

STEP 2B. MAIN ANTENNA

PLACE THE ANTENNA ON THE FRONT OF THE DISH
AND POSITION THE BRACKET ON THE BACK.

BOLT THE THREE COMPONENTS TOGETHER USING
FOUR (4) M6X19MM STAINLESS STEEL TIGHTEN
WITH 10MM SPANNER



ZONE	REV	DESCRIPTION	DATE	BY
	A	DRAFT FOR COMMENT	24/01/2023	AN

H

G

F

E

D

C

B

A

STEP 3. ATTACH TO THE MAST

TO ATTACH THE DISH, PLACE THE ALREADY ASSEMBLED PARABOLIC ANTENNA ON THE MAST.

USING THE TWO (2) U-BOLTS AND THE TWO (2) ADJUSTERS, ANCHOR THE SATELLITE DISH IN THE CORRECT POSITION AND ANGLE AND THEN TIGHTEN THE FOUR (4) M6 NUTS USING 10MM SPANNER.



H

G

F

E

D

C

B

A

H

G

F

E

D

C

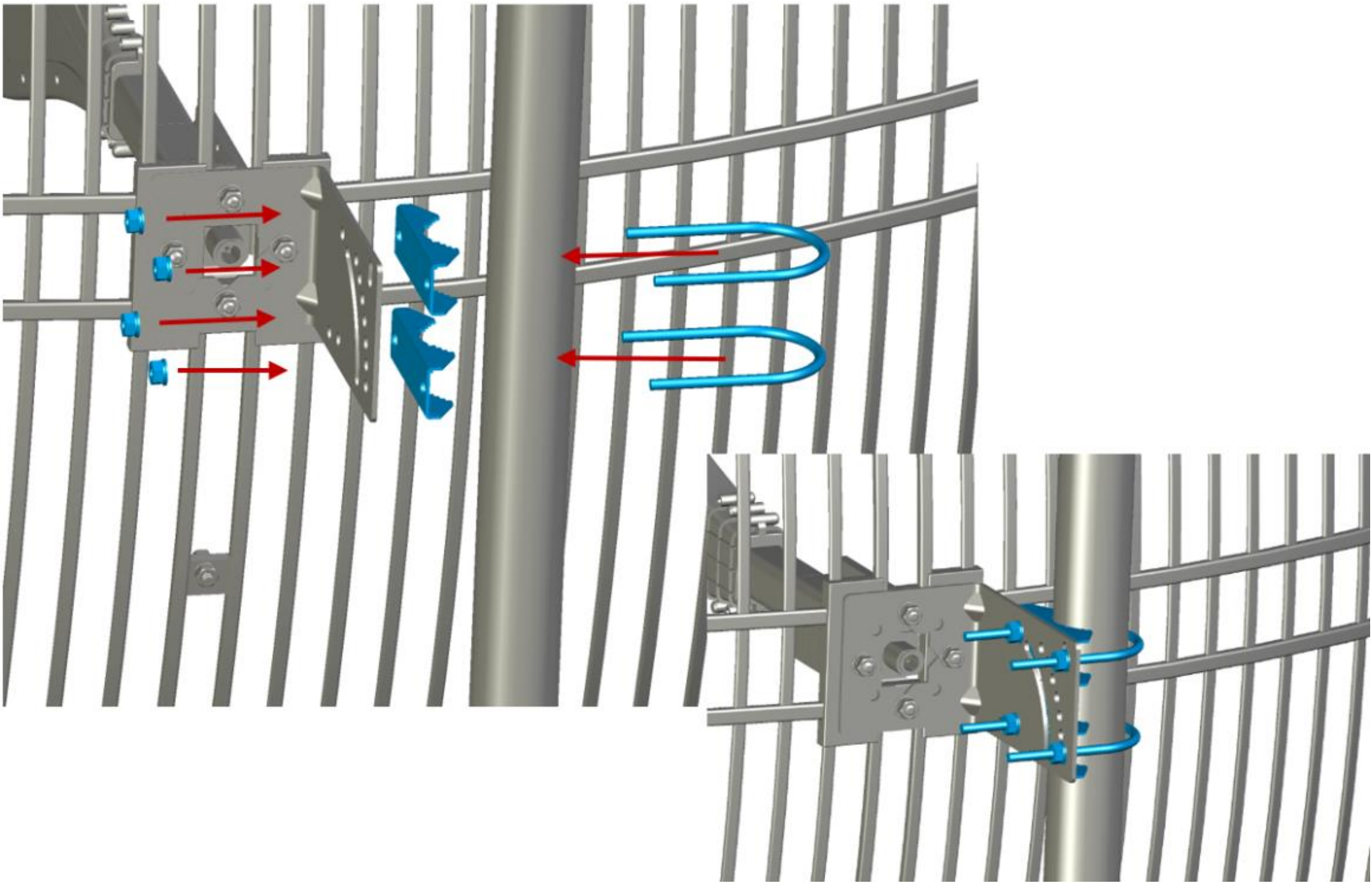
B

A

STEP 3B. ATTACH TO THE MAST

TO ATTACH THE DISH, PLACE THE ALREADY ASSEMBLED PARABOLIC ANTENNA ON THE MAST.

USING THE TWO (2) U-BOLTS AND THE TWO (2) ADJUSTERS, ANCHOR THE SATELLITE DISH IN THE CORRECT POSITION AND ANGLE AND THEN TIGHTEN THE FOUR (4) M6 NUTS USING 10MM SPANNER.



H

G

F

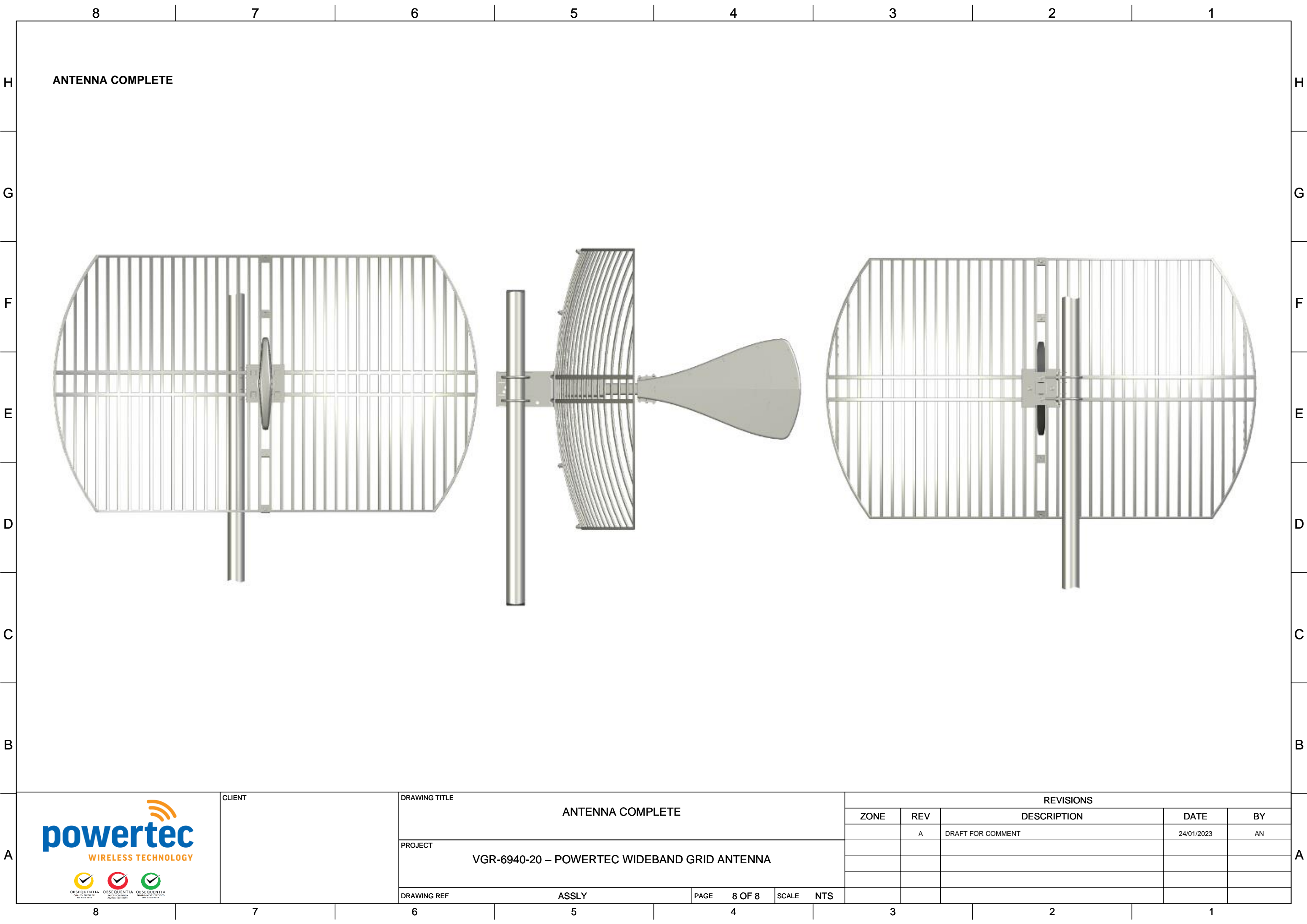
E

D

C

B

A





WIRELESS TECHNOLOGY



CLIENT	DRAWING TITLE				REVISIONS				
	ANTENNA COMPLETE				ZONE	REV	DESCRIPTION	DATE	BY
	PROJECT					A	DRAFT FOR COMMENT	24/01/2023	AN
	DRAWING REF								
	ASSLY				PAGE	8 OF 8	SCALE	NTS	